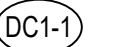
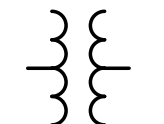
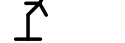
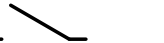
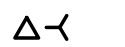


## ELECTRICAL SYMBOLS LEGEND



## ONE-LINE SYMBOLS LEGEND



## ELECTRICAL ABBREVIATIONS LIST

|                  |   |             |  |             |  |              |  |                     |                                   |
|------------------|---|-------------|--|-------------|--|--------------|--|---------------------|-----------------------------------|
|                  | 1 POLE (2P, 3P, 4P, ETC.)                 | DC<br>DCP   | DIRECT CURRENT<br>DOMESTIC WATER         | HT<br>HTG   | HEIGHT<br>HEATING  | N.C.<br>N.C. | NORMALLY CLOSED<br>NATIONAL ELECTRICAL CODE      | SWBD<br>SYMMETRICAL | SWITCHBOARD                       |
| A                | AMPERE                                    |             | CIRCULATING PUMP                         | HTR<br>HVAC | HEATER<br>HIGH VOLTAGE   | NEMA         | NATIONAL ELECTRICAL<br>MANUFACTURERS ASSOCIATION | SYM<br>SYSTEM       | TELEPHONE                         |
| AC               | ABOVE COUNTER OR AIR<br>CONDITIONER       | DEPT<br>DET | DEPARTMENT<br>DETAIL                     |             | HEATING, VENTILATING AND<br>AIR CONDITIONING                           | NFDS         | NON-FUSED SAFETY<br>DISCONNECT SWITCH            | TEL<br>TELEPHONE    | TEL/DATA<br>TELEPHONE/DATA        |
| ACLG             | ABOVE CEILING                             | DIA         | DIAMETER                                 |             |  |              |  | TERM                | TERMINAL                          |
| ADO              | AUTOMATIC DOOR OPENER                     | DISC        | DISCONNECT                               | HWP         | HYDRONIC WATER PUMP  | NIC          | NOT IN CONTRACT                                  | TL                  | TWIST LOCK                        |
| AF               | AMP FRAME                                 | DIST        | DISTRIBUTION                             |             |  | NL           | NIGHT LIGHT                                      | TR                  | TAMPER RESISTANT                  |
| AFB              | ABOVE FINISHED FLOOR                      | DOWN        | DOWN                                     | IC          | INTERRUPTING CAPACITY  | T-N.O.       | NORMALLY OPEN                                    | T-STAT              | THERMOSTAT                        |
| AFG              | ABOVE FINISHED GRADE                      | DN          | DAMPER                                   | IG          | ISOLATED GROUND  | NPF          | NORMAL POWER FACTOR                              | TT                  | TELEPHONE TERMINAL CABIN          |
| AFCI             | ARC FAULT CIRCUIT<br>INTERRUPTER          | DS          | SAFETY DISCONNECT SWITCH                 | IMC         | INTERMEDIATE METAL CONDUIT   | NTS          | NOT TO SCALE                                     | TV                  | TELEVISION                        |
| AHU              | AIR HANDLING UNIT                         | DT          | DOUBLE THROW                             | INCAND      | INCANDESCENT   |              |  | TVTC                | TELEVISION TERMINAL CABIN         |
| AL               | ALUMINUM                                  | DWG         | DRAWING                                  | IR          | INFRARED   | OH           | OVERHEAD   | TWPR                | TWISTED PAIR                      |
| ALT              | ALTERNATE                                 |             |  | I/W         | INTERLOCK WITH   | OL           | OVERLOADS  | TVP                 | TYPICAL                           |
| AMP              | AMPERE                                    | EC          | ELECTRICAL CONTRACTOR                    |             |  |              |  | UC                  | UNDER COUNTER                     |
| AMPL             | AMPLIFIER                                 | ELEC        | ELECTRIC, ELECTRICAL                     | J-BOX       | JUNCTION BOX   | PA           | PUBLIC ADDRESS                                   | UE                  | UNDERGROUND ELECTRICAL            |
| ANUN             | ANNUNCIATOR                               | EH          | EQUIPMENT GROUNDING CONDUCTOR            | KCMIL       | ONE THOUSAND CIRCULAR MILS   | PB           | PULL BOX OR PUSHBUTTON                           | UG                  | UNDERGROUND                       |
| APPROX           | APPROXIMATELY                             | EM          | EMERGENCY                                | KV          | KILOVOLT   | PE           | PNEUMATIC ELECTRIC                               | UH                  | UNIT HEATER                       |
| AQ-STAT          | AQUASTAT                                  | EMS         | ENERGY MANAGEMENT SYSTEM                 | KVA         | KILOVOLT-AMPERE  | PEF          | PEDESTAL   | UJ                  | UNDERGROUND TELEPHONE             |
| ARCH             | ARCHITECT, ARCHITECTURAL                  | EMT         | ELECTRICAL METALLIC TUBING               | KVAR        | KILOVOLT-AMPERE REACTIVE   | PF           | POWER FACTOR                                     | UTIL                | UTILITY                           |
| ARMS             | ARCHFLASH REDUCTION<br>MAINTENANCE SYSTEM | EP          | ELECTRIC PNEUMATIC<br>EQUIPMENT          | KW          | KILOWATT   | PH           | PHASE  | UV                  | UNIT VENTILATOR OR<br>ULTRAVIOLET |
| AS               | AMP SWITCH                                | EQUIP       | EQUIPMENT                                | KWH         | KILOWATT HOUR  | PIV          | POST INDICATING VALVE                            |                     |                                   |
| AT               | AMP TRIP                                  | ERMS        | ENERGY REDUCTION                         |             |  | PM           | POWER METER                                      | V                   | VOLT                              |
| AUTO             | AUTOMATIC TRANSFER SWITCH                 |             | MAINTENANCE SWITCH                       | LOC         | LOCATE OR LOCATION   | PNL          | PANEL  | VA                  | VOLT-AMPERES                      |
| ATS              | AUTOMATIC                                 | EWG         | ELECTRIC WATER COOLER                    | LSI         | LONG TIME + SHORT TIME +<br>INSTANTANEOUS PROTECTION                   | PP           | POWER POLE                                       | VD                  | VARIABLE DISPLAY TERMINAL         |
| AUXILIARY        | AUXILIARY                                 | EX          | EXISTING                                 | LSIG        | LONG TIME + SHORT TIME +<br>INSTANTANEOUS + GROUND<br>FAULT PROTECTION | PR           | PAIR   | VERT                | VERTICAL                          |
| AV               | AUDIO VISUAL                              | EXH         | EXHAUST                                  |             |  | PRI          | PRIMARY  | VFD                 | VARIABLE FREQUENCY DRIVE          |
| AWG              | AMERICAN WIRE GAUGE                       | EXP         | EXPLOSION PROOF                          |             |  | PROJ         | PROJECTION                                       | VOL                 | VOLUME                            |
|                  |   | FA          | FIRE ALARM                               | LT          | LIGHT  | PRV          | POTENTIAL TRANSFORMER                            |                     |                                   |
| BATT             | BATTERY                                   | FABP        | FIRE ALARM BOOSTER POWER<br>SUPPLY PANEL | LTG         | LIGHTING   | PVC          | POLYVINYL CHLORIDE<br>(CONDUIT)                  | W                   | WATT                              |
| BOARD            | BOARD                                     | FACP        | FIRE ALARM CONTROL PANEL                 | LV          | LOW VOLTAGE  | PWR          | POWER  | W/                  | WITH                              |
| BLDG             | BUILDING                                  | FCU         | FAN COIL UNIT                            |             |  | Q            | QUANTITY   | WG                  | WIRE GUARD                        |
| BMS              | BUILDING MANAGEMENT<br>SYSTEM             | FIXT        | FIXTURE                                  | MAX         | MAXIMUM  | QAN          | QUANTITY   | WH                  | WATER HEATER                      |
|                  |   | FLR         | FLOOR                                    | MAG.S       | MAGNETIC STARTER   |              |  | W/O                 | WITHOUT                           |
| CND              | CONDUIT                                   | FLUOR       | FLUORESCENT                              | M/C         | MOMENTARY CONTACT  | RCPT         | RECEPTACLE                                       | WPR                 | WEATHERPROOF                      |
| CAB              | CABINET                                   | FU          | FUSE                                     | MC          | MECHANICAL CONTRACTOR  | REQD         | REQUIRED   | XFMR                | TRANSFORMER                       |
| CAT              | CATALOG                                   | FUS         | FUSED SAFETY DISCONNECT<br>SWITCH        | MCB         | MAIN CIRCUIT BREAKER   | RM           | ROOM   | XFR                 | TRANSFER                          |
| CATV             | CABLE TELEVISION                          |             |  |             | MOLDED CASE CIRCUIT<br>BREAKER   | RS           | RIGID STEEL CONDUIT                              |                     |                                   |
| CB               | CIRCUIT BREAKER                           |             |  | MCC         | MOTOR CONTROL CENTER   | RTU          | ROOF TOP UNIT                                    |                     |                                   |
| CCTV             | CLOSED CIRCUIT TELEVISION                 | GA          | GAUGE                                    | MCB         | MOTOR CIRCUIT PROTECTOR  | SC           | SURFACE CONDUIT                                  |                     |                                   |
| CKT              | CIRCUIT                                   | MC          | MOTOR CIRCUIT                            | SCH         | SCHEDULE   | SCH          | SCHEDULE   |                     |                                   |
| CLG              | CEILING                                   | MDC         | MAIN DISTRIBUTION CENTER                 | SEC         | SECONDARY  | SEC          | SHEET  |                     |                                   |
| COMB             | COMBINATION                               | GALV        | GALVANIZED                               | SH          | SHIELD   | SIM          | SIMILAR  | ∠                   | ANGLE                             |
| CMR              | COMPRESSOR                                | GC          | GENERAL CONTRACTOR                       | MDP         | MAIN DISTRIBUTION PANEL  | S/N          | SOLID NEUTRAL                                    | @ AT                |                                   |
| CONN             | CONNECTION                                | GEC         | GROUNDING ELECTRODE CONDUCTOR            | MFR         | MANUFACTURER   | SPEC         | SPECIFICATION                                    | Δ                   | DELTA                             |
| CONST            | CONSTRUCTION                              | GFCI        | GROUND FAULT CIRCUIT<br>INTERRUPTER      | MFS         | MAIN FUSED DISCONNECT<br>SWITCH  | SPKR         | SPEAKER  | =                   | FEET                              |
| CONST            | CONTINUATION OR<br>CONTINUOUS             | GFP         | GROUND FAULT PROTECTOR                   | MH          | MANHOLE  | SP           | SPARE  | #                   | INCHES                            |
|                  |   | GND         | GROUND                                   | MIC         | MICROPHONE   | SPD          | SURGE PROTECTION DEVICE                          | Ø                   | PHASE                             |
| CONTR            | CONTRACTOR                                | GRS         | GALVANIZED RIGID STEEL<br>(CONDUIT)      | MIN         | MINIMUM  | SR           | SURFACE RACEWAY                                  | ∅                   | CENTER LINE                       |
| CONV             | CONVECTOR                                 | MISC        | MISCELLANEOUS                            | MLO         | MAIN LUGS ONLY   | SS           | STAINLESS STEEL                                  | PL                  | PLATE                             |
| CP               | CIRCULATING PUMP                          | GYP         | BD GYPSUM BOARD                          | MMS         | MANUAL MOTOR STARTER   | SSW          | SELECTOR SWITCH                                  |                     |                                   |
| CATHODE-RAY TUBE | CATHODE-RAY TUBE                          |             |  | MMA         | MULTIOUTLET ASSEMBLY   | S/S          | STOP/START PUSHBUTTONS                           |                     |                                   |
| CTR              | CURRENT TRANSFORMER                       | HH          | HANDHOLE                                 | MSP         | MOTOR STARTER PANELBOARD   | STA          | STATION  |                     |                                   |
| CU               | CENTER                                    | HORIZ       | HORIZONTAL                               | MSBD        | MAIN SWITCHBOARD   | STD          | STANDARD   |                     |                                   |
| CUT              | COPPER                                    |             |  | MT          | MOUNT  | SURF         | SURFACE MOUNTED                                  |                     |                                   |
|                  |   | HPF         | HIGH POWER FACTOR                        | MTC         | EMPTY CONDUIT  |              | SUITABLE FOR USE AS<br>SERVICE EQUIPMENT         |                     |                                   |
|                  |   |             |  | MTR         | MANUAL TRANSFER SWITCH   | SW           | SWITCH   |                     |                                   |
|                  |   |             |  |             | MOTOR, MOTORIZED   |              |  |                     |                                   |


## NOTES

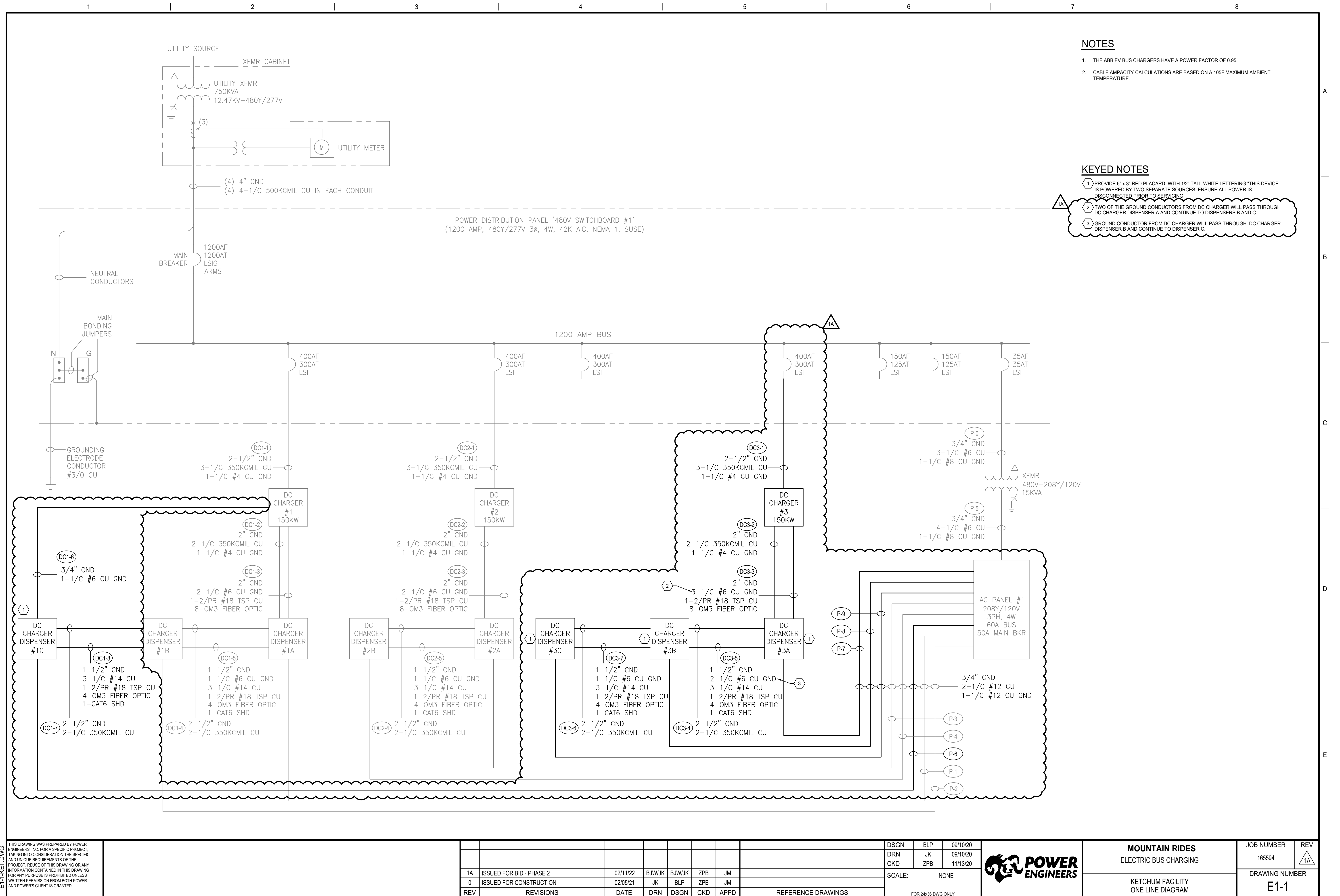
1. THE ELECTRICAL INSTALLATION SHALL MEET THE MINIMUM REQUIREMENTS OF THE 2017 NATIONAL ELECTRIC CODE AS ADOPTED BY THE STATE OF IDAHO AND LOCAL BUILDING CODES.
2. ALL ELECTRICAL EQUIPMENT SHALL BE LISTED AND APPROVED AND SUITABLE FOR THE INSTALLATION.
3. DRAWINGS ARE DIAGRAMMATIC ONLY AND SHOW THE GENERAL INTENT OF LOCATIONS AND INSTALLATION REQUIREMENTS OF EQUIPMENT. EXACT LOCATIONS AND INSTALLATION MATERIALS REQUIRED SHALL BE VERIFIED IN FIELD WITH ACTUAL INSTALLED EQUIPMENT.
4. ALL EXISTING CONDITIONS SHALL BE VERIFIED AT THE JOB SITE PRIOR TO BID SUBMITTALS.
5. ALL WALL AND CEILING PENETRATIONS SHALL BE SEALED WITH MATERIALS APPROVED TO MAINTAIN FIRE RATINGS.
6. EQUIPMENT GROUNDING CONDUCTORS SHALL BE INSTALLED IN CONDUIT, UNLESS NOT OTHERWISE.
7. MULTIWIRED BRANCH CIRCUITS (SHARED NEUTRALS) SHALL NOT BE USED.
8. PROVIDE PVC40 CONDUIT WITH PVC80 FITTINGS FOR ALL UNDERGROUND CONDUIT
9. PROVIDE EMT CONDUIT FOR ALL INDOOR AND OUTDOOR ABOVEGROUND CONDUIT PAINTED TO MATCH THE EXISTING CONDITIONS.
10. PROVIDE THWN/THHN COPPER CONDUCTORS FOR ALL POWER CONDUCTORS. ALL CONDUCTORS #10 AND SMALLER SHALL BE SOLID. CONDUCTORS #8 AND LARGER SHALL BE STRANDED. TYPE NM CABLE IS NOT PERMITTED.
11. ALL CABLE TERMINATIONS AND FITTINGS SHALL BE RATED FOR A MINIMUM OF 75C.
12. PROVIDE BARE COPPER CONDUCTORS FOR BONDING. EQUIPMENT GROUNDING CONDUCTORS SHALL BE COPPER WITH GREEN INSULATION.
13. ALL OUTDOOR EQUIPMENT SHALL BE NEMA TYPE-3R.
14. PROVIDE CURRENT LIMITING FUSES FOR ALL FUSES IN ACCORDANCE WITH UL-4248A
15. ELECTRICAL SWITCHBOARDS SHALL HAVE A NEMA TYPE-1 RATINGS WITH COPPER BUSSING. THE CIRCUIT BREAKERS SHALL BE THE BOLT-ON TYPE.
16. GROUND RODS SHALL BE CONE POINTED COPPER, 10' IN LENGTH, WITH A 3/4" DIAMETER. SECTIONAL RODS ARE PERMITTED.
17. PROVIDE A TRANSFORMER PAD AS REQUIRED BY IDAHO POWER.
18. LOCATE EXISTING UNDERGROUND UTILITIES IN THE THE PROPOSED AREA FOR THE NEW SECONDARY CONDUITS FOR UNDERGROUND UTILITIES PRIOR TO DIGGING.
19. THIS FACILITY IS IN SEISMIC ZONE 2R. CONTRACTOR SHALL ADHERE TO THE LOCAL CODES WHEN INSTALLING AND MOUNTING EQUIPMENT AND RACEWAYS.

|     |                          |          |        |        |     |      |                    |  |  |
|-----|--------------------------|----------|--------|--------|-----|------|--------------------|--|--|
|     |                          |          |        |        |     |      |                    |  |  |
|     |                          |          |        |        |     |      |                    |  |  |
|     |                          |          |        |        |     |      |                    |  |  |
| 1A  | ISSUED FOR BID - PHASE 2 | 02/11/22 | BJW/JK | BJW/JK | ZPB | JM   |                    |  |  |
| 0   | ISSUED FOR CONSTRUCTION  | 02/05/21 | JK     | BLP    | ZPB | JM   |                    |  |  |
| REV | REVISIONS                | DATE     | DRN    | DSGN   | CKD | APPD | REFERENCE DRAWINGS |  |  |

|                    |     |          |
|--------------------|-----|----------|
| DSGN               | BLP | 09/14/20 |
| DRN                | JK  | 09/14/20 |
| CKD                | ZPB | 11/13/20 |
| SCALE:             |     | N/A      |
| FOR 24x36 DWG ONLY |     |          |



|  |                                      |   |
|--|--------------------------------------|---|
| <b>MOUNTAIN RIDES</b>                    | <b>JOB NUMBER</b>                    | <b>REV</b>  |
| ELECTRIC BUS CHARGING                    | 165594                               |  |
| KETCHUM FACILITY<br>COVER SHEET & LEGEND | <b>DRAWING NUMBER</b><br><b>E0-1</b> |   |



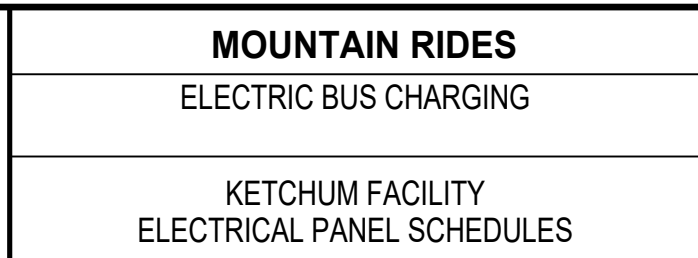
1A


1 BREAKER SHALL COME EQUIPPED WITH A 30mA GFCI.

1A

THIS DRAWING WAS PREPARED BY POWER ENGINEERS, INC. FOR A SPECIFIC PROJECT TAKING INTO CONSIDERATION THE SPECIFIC AND UNIQUE REQUIREMENTS OF THE PROJECT. REUSE OF THIS DRAWING OR ANY INFORMATION CONTAINED IN THIS DRAWING FOR ANY PURPOSE IS PROHIBITED UNLESS WRITTEN PERMISSION FROM BOTH POWER AND POWER'S CLIENT IS GRANTED.

|                    |     |          |
|--------------------|-----|----------|
| DSGN               | BLP | 09/14/20 |
| DRN                | JK  | 09/14/20 |
| CKD                | ZPB | 11/13/20 |
| SCALE:             |     | NONE     |
| FOR 24x36 DWG ONLY |     |          |



|                        |  |
|------------------------|--|
| JOB NUMBER<br>165594   | REV<br> |
| DRAWING NUMBER<br>E3-1 |  |



CHARGER SUPPORT FRAME IS TO SIT ON THE CONCRETE SLAB. GROUT UNDERNEATH AS NECESSARY TO LEVEL THE FRAME.

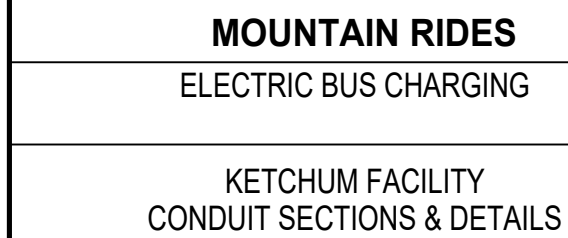


1 CONDUITS MUST PENETRATE EXTERIOR WALL 24" MINIMUM ABOVE TOP OF UTILITY XFMR PAD AND HAVE A WATERPROOF SEAL BETWEEN LB CONDULETS AND WALL PENETRATION. WATER PROOF SEAL TO BE FOAM APPROVED FOR CABLE INSULATION AND DUCT SEAL COMPOUND.



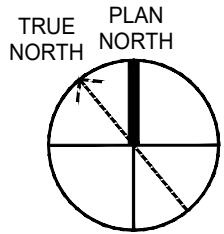
THIS DRAWING WAS PREPARED BY POWER ENGINEERS, INC. FOR A SPECIFIC PROJECT, TAKING INTO CONSIDERATION THE SPECIFIC AND UNIQUE REQUIREMENTS OF THE PROJECT. REUSE OF THIS DRAWING OR ANY INFORMATION CONTAINED IN THIS DRAWING FOR ANY PURPOSE IS PROHIBITED UNLESS WRITTEN PERMISSION FROM BOTH POWER AND POWER'S CLIENT IS GRANTED.

|                    |     |              |
|--------------------|-----|--------------|
| DSGN               | BLP | 09/18/20     |
| DRN                | JK  | 09/18/20     |
| CKD                | ZPB | 11/13/20     |
| SCALE:             |     | AS INDICATED |
| FOR 24x36 DWG ONLY |     |              |



|                |     |
|----------------|-----|
| JOB NUMBER     | REV |
| 165594         | 1A  |
| DRAWING NUMBER |     |
| E6-1           |     |



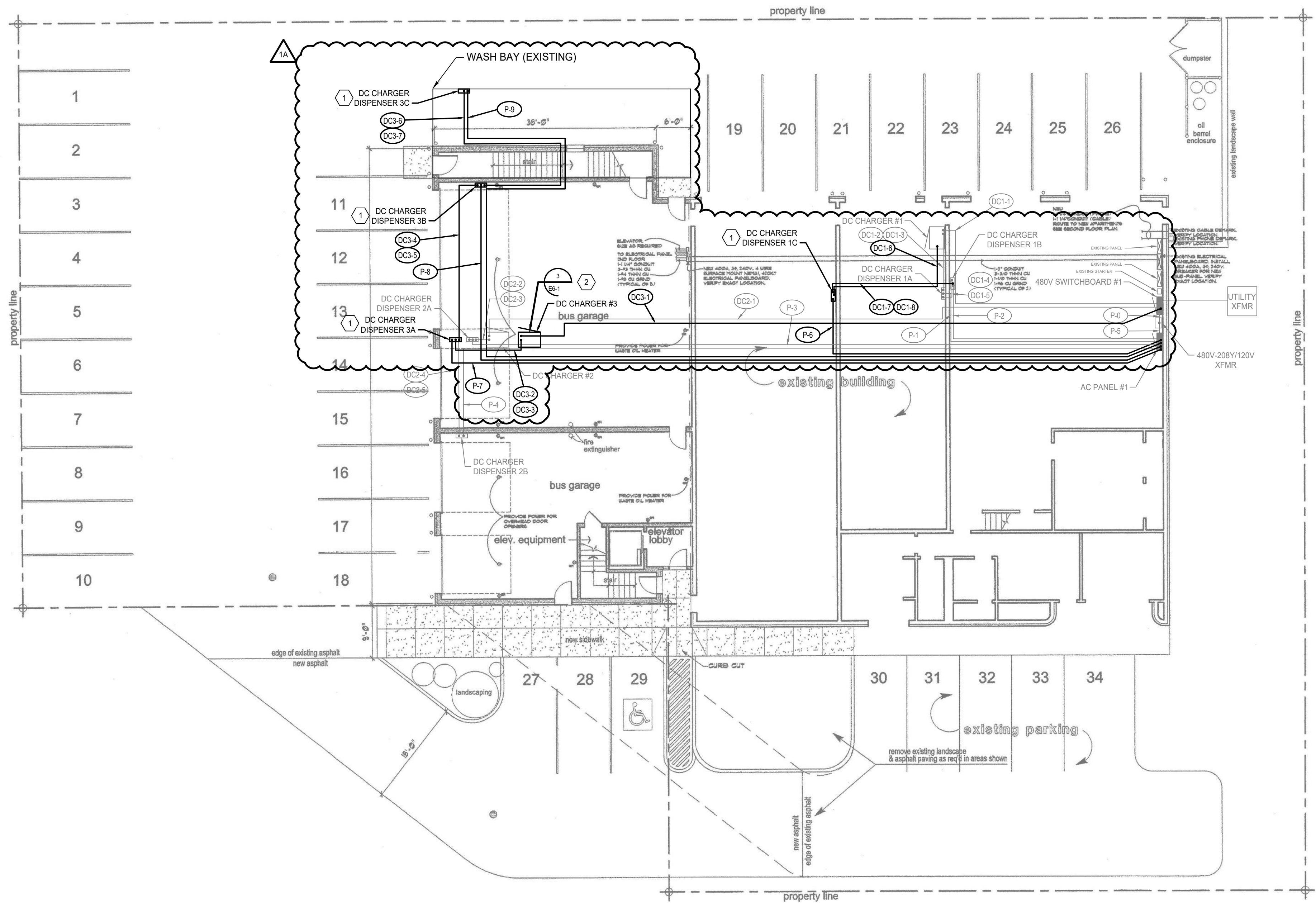


NOTES

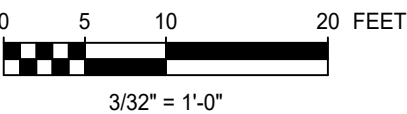
1. REFER TO ONE-LINE DIAGRAM DRAWING E1-1 FOR CONDUIT & CABLE REQUIREMENTS.
2. CONTRACTOR TO PROVIDE EQUIPMENT, CONDUITS, & TERMINATE POWER & COMMUNICATION CABLES. REFER TO ONE LINE DIAGRAM FOR CABLE SIZING.
3. CONDUIT ROUTING IS SHOWN FOR REFERENCE ONLY. CONTRACTOR TO DETERMINE THE BEST CONDUIT ROUTE IN THE FIELD.

KEYED NOTES

- 1 PROVIDE 6" x 3" RED PLACARD WITH 1/2" TALL WHITE LETTERING "THIS DEVICE IS POWERED BY TWO SEPARATE SOURCES. ENSURE ALL POWER IS DISCONNECTED PRIOR TO SERVICING."
- 2 PROVIDE CUSTOM FABRICATED STEEL SUPPORT STAND WITH A 6" C-CHANNEL BASE FOR ABOVEGROUND CONDUIT ENTRY TO THE BOTTOM OF THE EV CHARGER.



1 FIRST FLOOR POWER PLAN  
SCALE: 3/32" = 1'-0"



THIS DRAWING WAS PREPARED BY POWER ENGINEERS, INC. FOR A SPECIFIC PROJECT. TAKING INTO CONSIDERATION THE SPECIFIC AND UNIQUE REQUIREMENTS OF THE PROJECT, REUSE OF THIS DRAWING OR ANY INFORMATION CONTAINED IN THIS DRAWING FOR ANY PURPOSE IS PROHIBITED UNLESS WRITTEN PERMISSION FROM BOTH POWER AND POWER'S CLIENT IS GRANTED.

E7-1-KET.DWG

|     |                          |          |        |        |     |      |
|-----|--------------------------|----------|--------|--------|-----|------|
| 1A  | ISSUED FOR BID - PHASE 2 | 02/11/22 | BJW/JK | BJW/JK | ZPB | JM   |
| 0   | ISSUED FOR CONSTRUCTION  | 02/05/21 | JK     | BLP    | ZPB | JM   |
| REV | REVISIONS                | DATE     | DRN    | DSGN   | CKD | APPD |

|                    |             |          |
|--------------------|-------------|----------|
| DSGN               | BLP         | 09/14/20 |
| DRN                | JK          | 09/14/20 |
| CKD                | ZPB         | 11/13/20 |
| SCALE:             | 3/32"=1'-0" |          |
| FOR 24x36 DWG ONLY |             |          |
| REFERENCE DRAWINGS |             |          |



|                        |                |     |
|------------------------|----------------|-----|
| <b>MOUNTAIN RIDES</b>  | JOB NUMBER     | REV |
| ELECTRIC BUS CHARGING  | 165594         | 1A  |
| KETCHUM FACILITY       | DRAWING NUMBER |     |
| FIRST FLOOR POWER PLAN | E7-1           |     |

|                |     |
|----------------|-----|
| JOB NUMBER     | REV |
| 165594         | 1A  |
| DRAWING NUMBER |     |
| E7-1           |     |