



PUBLIC NOTICE of Special Board Meeting – Joint Committee Workshop

AGENDA

Wednesday, 10/1/14, 1:30pm

Webb Conference Room Annex, 191 8th Street, Suite D, Ketchum, ID 83340

Board Members: Chair Susan McBryant (Hailey), Vice-Chair Mark Gilbert (Sun Valley), Secretary Steve Wolper (at-large), Michael David (Ketchum), Nils Ribi (Sun Valley), David Patrie (Blaine Co.), Joe Miczulski (Bellevue), Kristin Derrig (Ketchum)

- 1) 1:30p – Call the meeting to order.
- 2) Review public comments and staff recommended updates to FY2015 transportation service plan
- 3) Discuss easement agreement with KURA for development of Ketchum Hub project
- 4) Review South Valley facility design concepts from JHS architects
- 5) Revisit LEED option costs for South Valley facility
- 6) Adjourn.

Public information on agenda items is available from the Mountain Rides office at 800 1st Ave. N. or 208-788-7433. Any person needing special accommodation to attend the above noticed meeting should contact Mountain Rides three days prior to the meeting at 208-788-7433.



FY2015 Transportation Service Plan

UPDATED with public comments received – 10/1/14

Since our last board meeting, Mountain Rides has been soliciting public comments for the upcoming service plan update. The public comments received have been limited due to the fact, we believe, that there are not many changes being proposed, and we are largely keeping services as is.

Here are the public comments received:

- General bus comments
 - Allow dogs on buses, especially poodles
 - Daily bus to Galena Lodge in season – 2x (am and pm)
 - Resident pass needed – locals should get a discount
- Valley Route
 - Need bus stop at skate park
 - Express bus in morning from Hailey to Ketchum
 - More frequent buses in the morning
 - Less kids
 - Kids are rude and bump into regular commuter passengers
 - Need ½ hour service starting at 3p north and southbound
 - I am very pleased with morning run schedule
 - Kids in the afternoon can be loud and out of control
- Hailey Route
 - Airport service on weekends
 - Need a bus at 3:40 going towards town from Community Campus
 - Have Hailey Route bus run in between Valley Route bus times (change by 30 minutes)
- Red Route
 - Keep the route “as is”
 - Starting the route later is OK as long as it starts before July 4th
 - Good news for Red Route Bus Buddies
- Green Route
 - Needs to run through midday without a break

Most of these comments relate to issues we are aware of – we continue to work with schools and our drivers to make their impact manageable; we know there are many spots in the schedule where it would be nice to add service (Green, Valley and Hailey all have places where more service would be helpful but we don’t have the budget); the current dog policy is a balance of attracting rides while protecting safety and comfort (dogs

are allowed as service animals and in carriers); and pass prices are something that continually need to be looked at and adjusted to retain and attract ridership.

Since our last discussion, we have continued to look at how to balance the budget and make some service improvements. We have also refined the service plan such that we can retain more summer service. Here are the latest adjustments since the last discussion at the September board meeting:

- Summer season will be shortened by only 1 week, instead of 2 – it will start June 20th
- Valley Route cash fares within Hailey and to/from Bellevue to help increase revenue

Following is the service plan with the proposed changes highlighted in yellow.

SEASONS

Here are the seasons we would define, as compared to 2014 seasons

Season	FY2014	FY2015
Early Winter	Nov 28 – Dec 13	Nov 27 – Dec 12
Peak Winter	Dec 14 – March 31	Dec 13 – Mar 31
Late Winter	April 1 – April 20	Apr 1 – Apr 19
Spring slack	April 21 – June 13	Apr 20 – June 26
Summer	June 14 – Sept 7	June 20 – Sept 6
Fall slack	Sept 8 – Nov 26	Sept 7 – Nov 25

Here is a route by route look at staff recommendations:

BLUE

No changes to route configuration or timing. Dates/times of service:

Departure #1 (:00 out of Warm Springs, and :30 out of Elkhorn Springs)

- Runs year-round
- 7a – 9:30p hours of service year-round

Departure #2 (:30 out of Warm Springs, and :00 out of Elkhorn Springs)

- Runs all winter (Nov 27-April 19) and summer (June 20-Sept 6) seasons
- 7:30a – 1:00a during winter
- 7:30a – 11:00p during summer (this is an improvement over FY14 summer schedule when Blue #2 didn't start until 10:30a)

RED

No changes to route configuration or timing. Dates/times of service:

Departure #1 (:30 out of Elkhorn Springs, :00 out of downtown Ketchum)

- Runs entire winter and summer seasons
- 8:30a – 5:00p hours of service winter
- 8:30a – 5:30p hours of service summer (summer season is proposed to be 1 week shorter)
- Continue to provide symphony service

Departure #2 (:00 out of Elkhorn Springs, :30 out of downtown Ketchum)

- Runs winter peak (Dec 13- Mar 31)

- 9:00a – 4:00p

GREEN

Change route to end at Baldy View Cr at Sun Valley Resort. Route timing would change a few minutes between :56 and :10 in order to accommodate this change. Dates/times of service:

Departure #1 (:00 out of Sun Valley Baldy Cr, :35 out of Meadows)

- Runs 7 days/wk during entire winter season
- Runs 5 days/wk during slack and summer season
- 7:35a – 11a and 2:00p-5:30p hours of service (no service between 11a-2p) – this is the same year-round

HAILEY

No changes to route configuration or timing. Dates/times of service:

Departure #1 (:00 out of south Woodside, :34 out of Albertsons)

- Weekday service only
- 8:00a – 5:00p hours of service (fill midday gap)

VALLEY

No changes to current schedule or route configuration. One minor adjustment is to move 3:05p northbound trip by 10 minutes to allow for more recovery time and chance for more kids to use express school bus to eliminate Mountain Rides' overloads. See printed schedule for exact schedule. Midday gap in service remains.

SILVER

No changes to route configuration or timing. Dates/times of service:

Departure #1/3 (:00 and :30 out of Sun Valley Baldy Cr, and :15 and :45 out of River Run)

- Runs entire winter season from mountain open until mountain close
- 7a – 9:30p hours of service

Departure #2/4 (:15 and :45 out of Sun Valley Baldy Cr, and :00 and :30 out of River Run)

- Runs all winter (Nov 27-April 19) and summer (June 27-Sept 6) seasons
- 7:30a – 1:00a during winter

BRONZE

No changes to route configuration or timing. Dates/times of service:

Departure #1/2 (:00 and :30 out of Sun Valley Baldy Cr, and :15 and :45 out of Warm Springs)

- Runs winter peak season only
- 8:30a – 11:00a and 1:15p – 3:30p hours of service

OTHER TRANSPORTATION SERVICES

Mountain Rides will also continue to operate:

- ✓ Vanpool services
 - Public routes, Webb routes and Sun Valley Co routes
 - 8-14 routes, depending on time of year
- ✓ Safe Routes to School
 - Education, events and encouragement at schools for biking and walking to school

- ✓ 5B BikeShare
 - 40 bikes – 20 in Hailey and 20 in Ketchum
- ✓ Multi-modal transportation planning and employer support

RECORDING REQUESTED BY AND WHEN
RECORDED MAIL TO:

Space above line for Recorder's use

**EASEMENT AND USE AGREEMENT BETWEEN MOUNTAIN RIDES AND
KETCHUM URBAN RENEWAL AGENCY**

THIS AGREEMENT (hereinafter the "Agreement") is made and entered August 18, 2014, by and between The Ketchum Urban Renewal Agency (hereinafter referred to as "URA") and the Mountain Rides Transportation Authority (hereinafter referred to as "Mountain Rides").

1) The URA is an urban renewal agency formed pursuant to Idaho Code § 50-2001, et seq. The URA is entitled to own property and enter into agreements relating to the use thereof.

2) The URA is the owner in fee simple of a parcel of property located in Ketchum, Idaho, which includes that property denoted as Bus Shelter Amenities locations as depicted on Exhibit A6, attached hereto (the "Easement Parcel").

3) Mountain Rides is an Idaho Transportation Authority formed and existing pursuant to a Joint Powers Agreement.

4) Mountain Rides desires to place improvements known as Bus Shelter Amenities on the Easement Parcel. The improvements in these locations include covered waiting areas, benches, signage, and lighting.

5) The URA has consented to the plan for the construction of such improvements. As part of the construction of such improvements Mountain Rides will access and utilize electrical power from the building adjacent to the Easement Parcel for lights, heaters, and signage in the Easement Parcel. Mountain Rides shall reimburse the URA for the cost of such utility usage.

6) The URA hereby grants to Mountain Rides an exclusive easement over, across and through the Easement Parcel for the purposes and subject to the terms, covenants and conditions set forth below. The easement term shall initially be for ten (10) years from the date of this agreement. The easement term may be renewed for successive five (5) year terms upon properly authorized written notice from the URA to Mountain Rides.

7) Mountain Rides shall perform maintenance and upkeep for the Bus Shelter Amenities, including power washing the passenger waiting area 2x per year or as requested by the URA, removing graffiti in a timely manner, replacing and repairing any part of the additional

structures added as part of this project (benches, trellis coverings, heater) that fall into substantial disrepair and periodic cleaning as reasonably necessary.

a. Mountain Rides shall pay electric utility costs for the bus shelter heaters and the digital information sign. Mountain Rides shall reimburse the URA for the cost of such utility and easement usage in the amount of \$300 per month, with the amount of such payment to be negotiated on a yearly basis. In the event Mountain Rides and the URA cannot agree on a fee amount, either party shall have the right to terminate this Agreement.

b. Mountain Rides shall perform maintenance, updating and upkeep of all of the bus information signage (digital and static) and posts and/or mounts that hold the bus information signage.

c. Mountain Rides shall be responsible for snow removal and de-icing for the Easement Area.

d. The URA acknowledges that such improvements shall be owned by Mountain Rides.

8) Governing Law. The validity, meaning and effect of this Agreement shall be determined in accordance with the laws of the State of Idaho applicable to agreements made and performed in that state.

9) Necessary Acts. Each party agrees to perform any further acts and execute any documents that may be reasonably necessary to effect the purpose of this Agreement.

10) Invalid Provisions. In the event that any provision of this Agreement is deemed to be invalid by reason of the operation of any law, or by reason of the interpretation placed thereon by any court or other governmental body, this Agreement shall be construed as not containing such provision and the invalidity of such provision shall not affect the validity of any other provision hereof, and any and all other provisions hereof which otherwise are lawful and valid shall remain in full force and effect.

11) Mountain Rides agrees to obtain and keep in force during its acts under this Agreement a comprehensive general liability insurance policy in the minimum amount of \$500,000 which shall name and protect the City, its officers, agents, employees and City Council from and against any and all claims, losses, actions, and judgments for damages or injury to persons or property arising out of or in connection with Mountain Rides' acts.

12) Mountain Rides agrees to indemnify, defend, and hold harmless the City and its officers, agents, employees and City Council from and against all claims, losses, actions, or judgments for damages or injury to persons or property arising out of or in connection with the act and/or any performances or activities of Mountain Rides, its agents, employees, or representatives under this Agreement.

KETCHUM URBAN RENEWAL AGENCY

By: _____
Mark Eshman, Chairperson

STATE OF IDAHO)
) ss.
County of Blaine)

On this ____ day of _____, 2014, before me, the undersigned, a Notary Public in and for said State, personally appeared Mark Eshman, known or identified to me to be the person whose name is subscribed to the within instrument.

WITNESS my hand and seal the day and year in this certificate first above written.

Notary Public for Idaho
Residing at: _____, Idaho
Commission Expires: _____

MOUNTAIN RIDES TRANSPORTATION
AUTHORITY

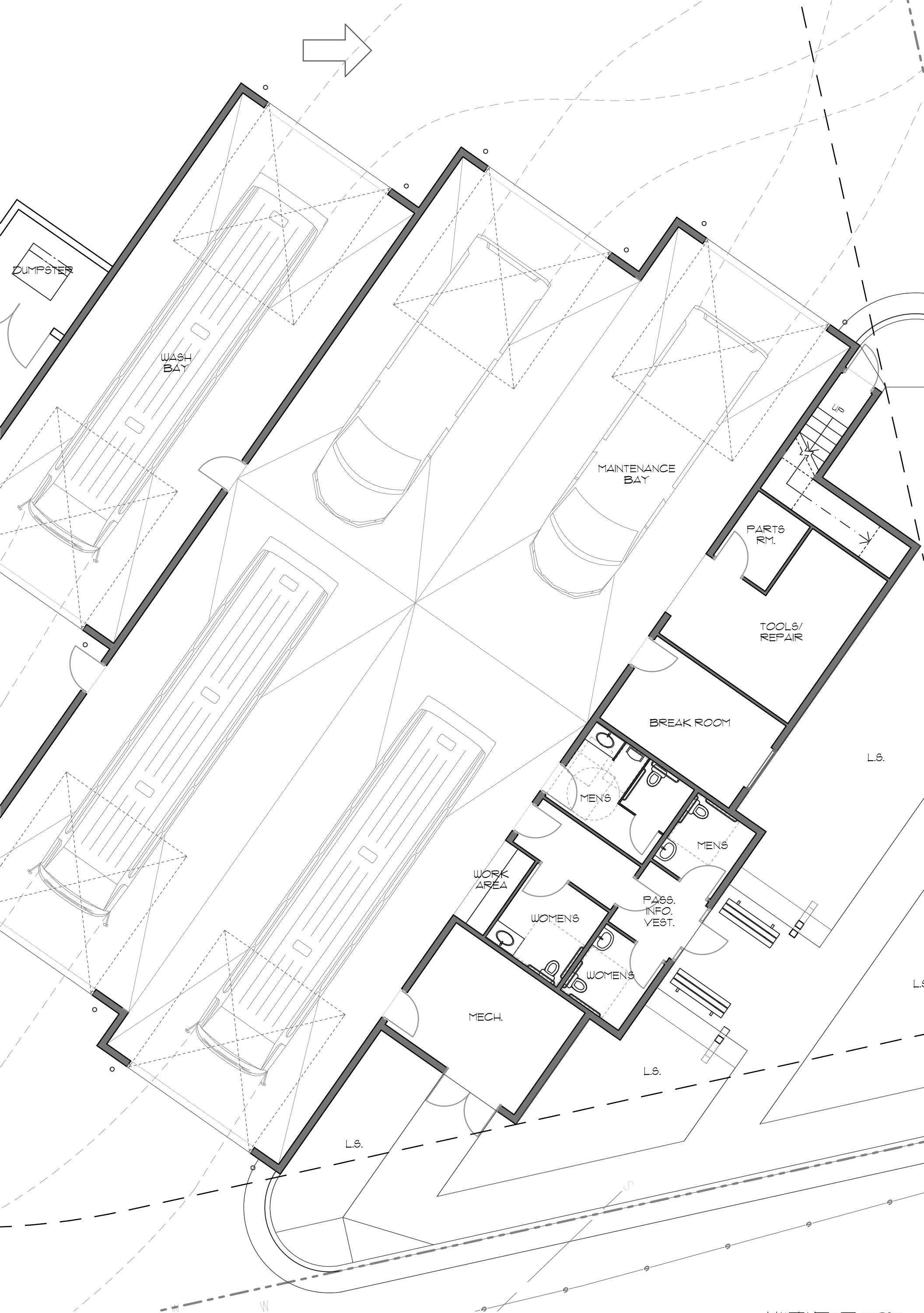
By: _____
Jason Miller, Executive Director

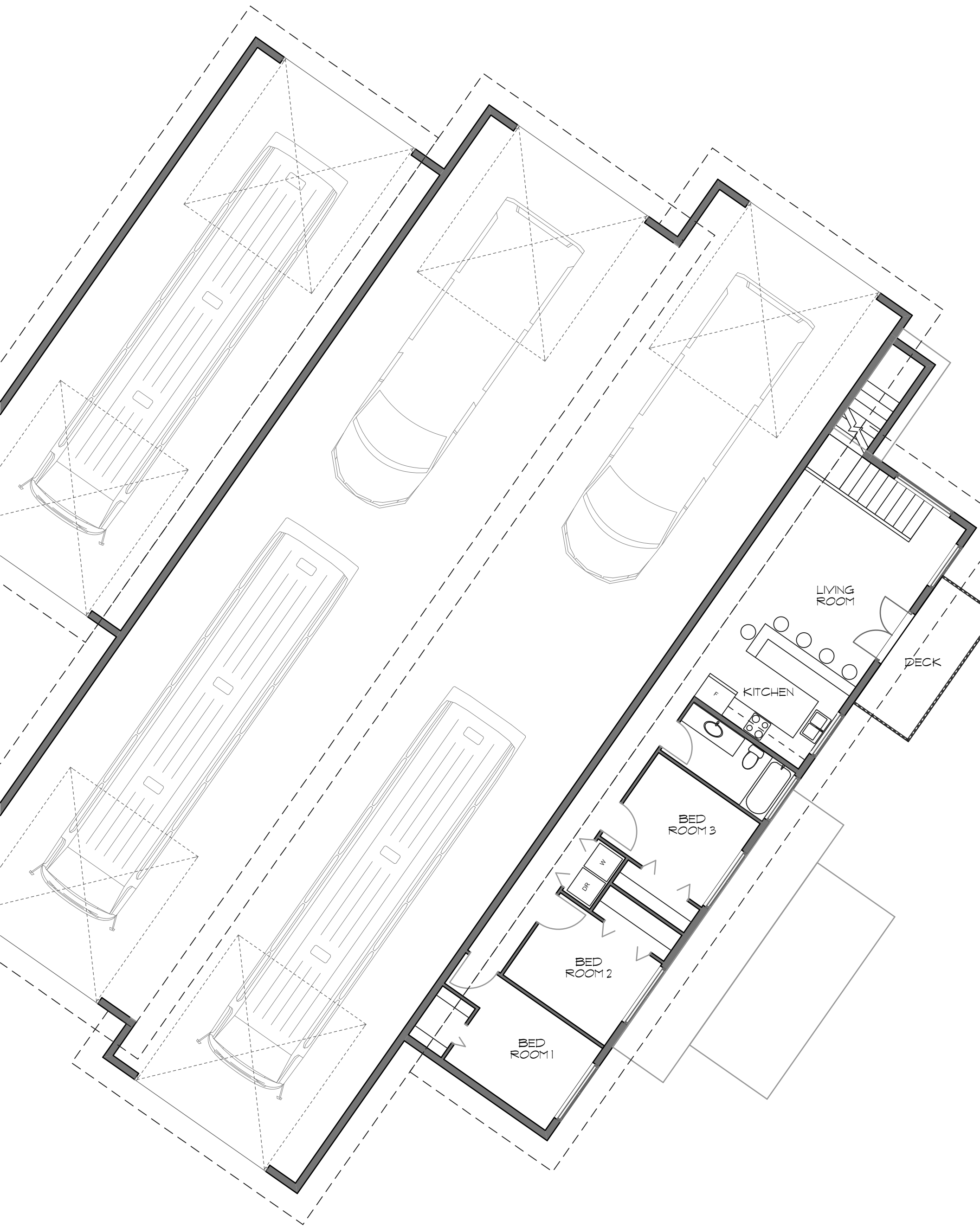
STATE OF IDAHO)
) ss.
County of Blaine)

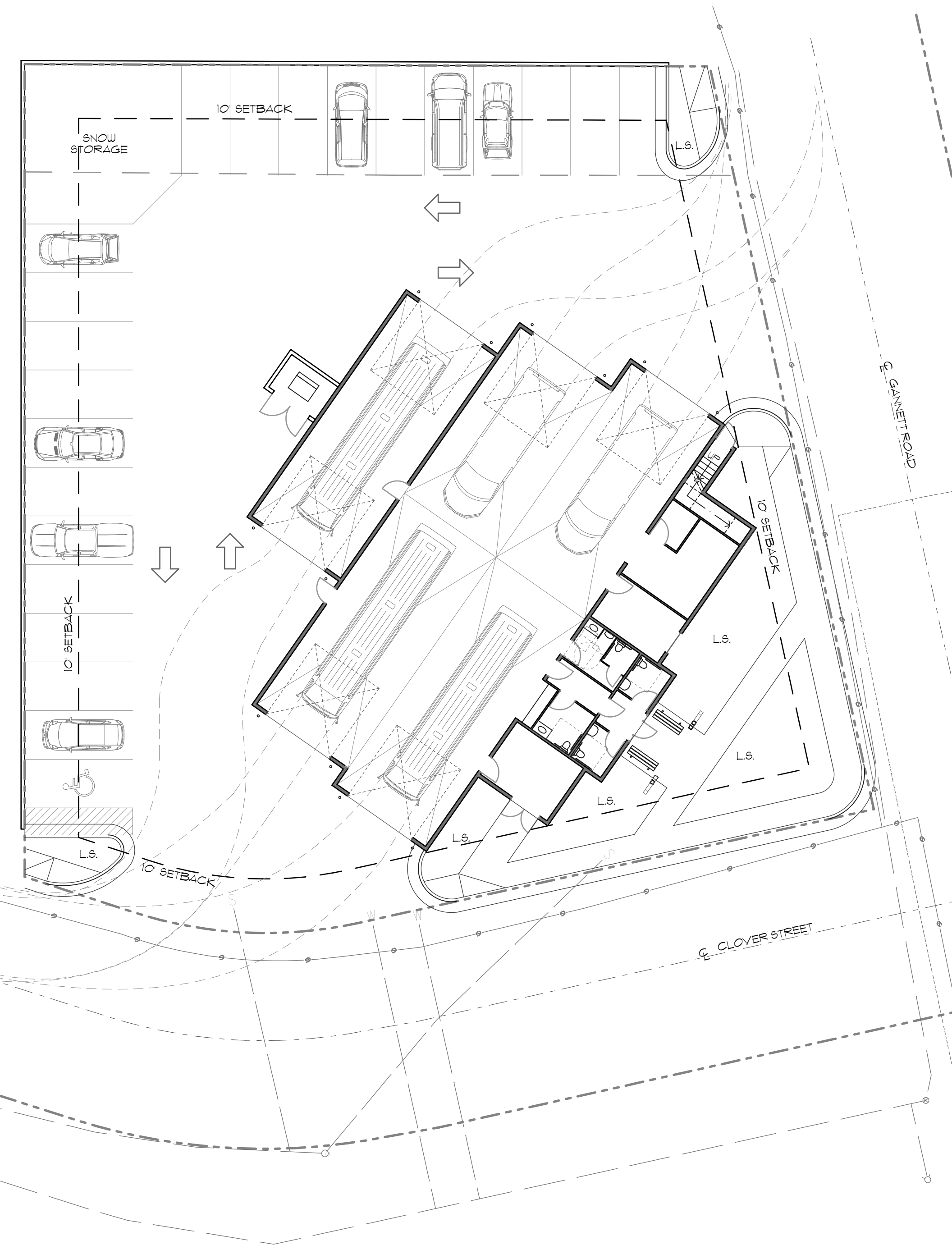
On this ____ day of August, 2014, before me, the undersigned, a Notary Public in and for said State, personally appeared Jason Miller, known or identified to me to be the person whose name is subscribed to the within instrument.

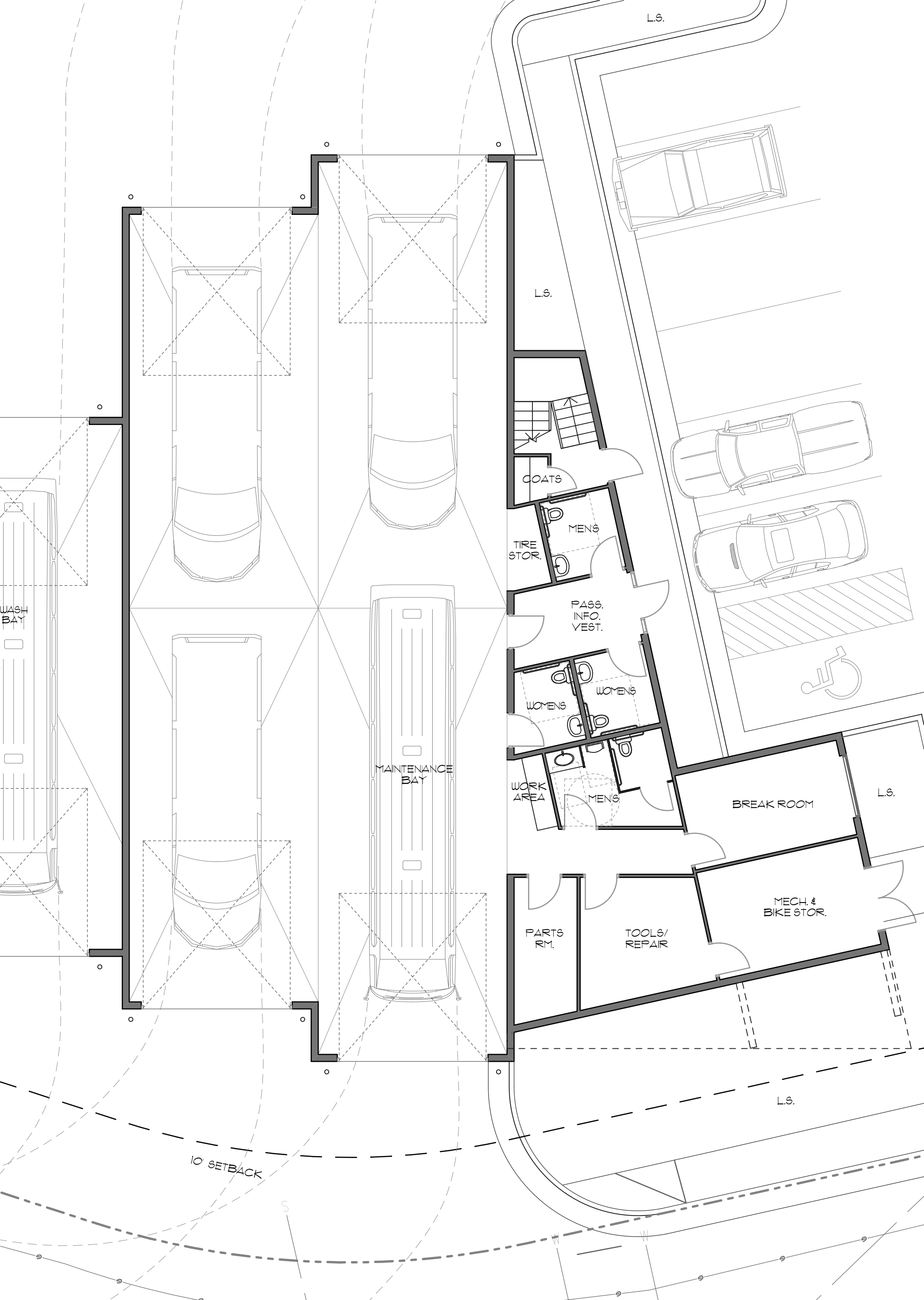
WITNESS my hand and seal the day and year in this certificate first above written.

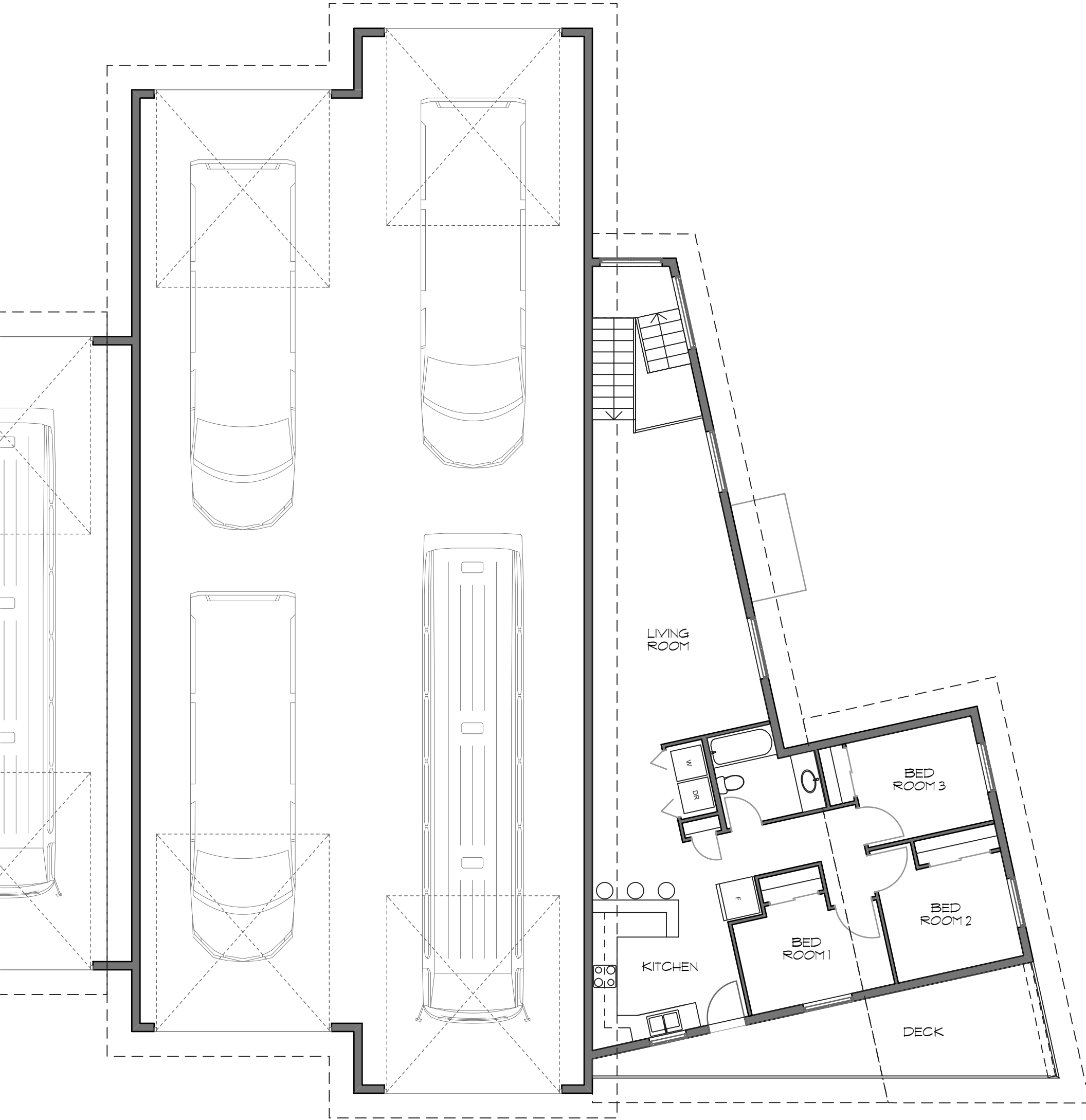
Notary Public for Idaho
Residing at: _____, Idaho
Commission Expires: _____

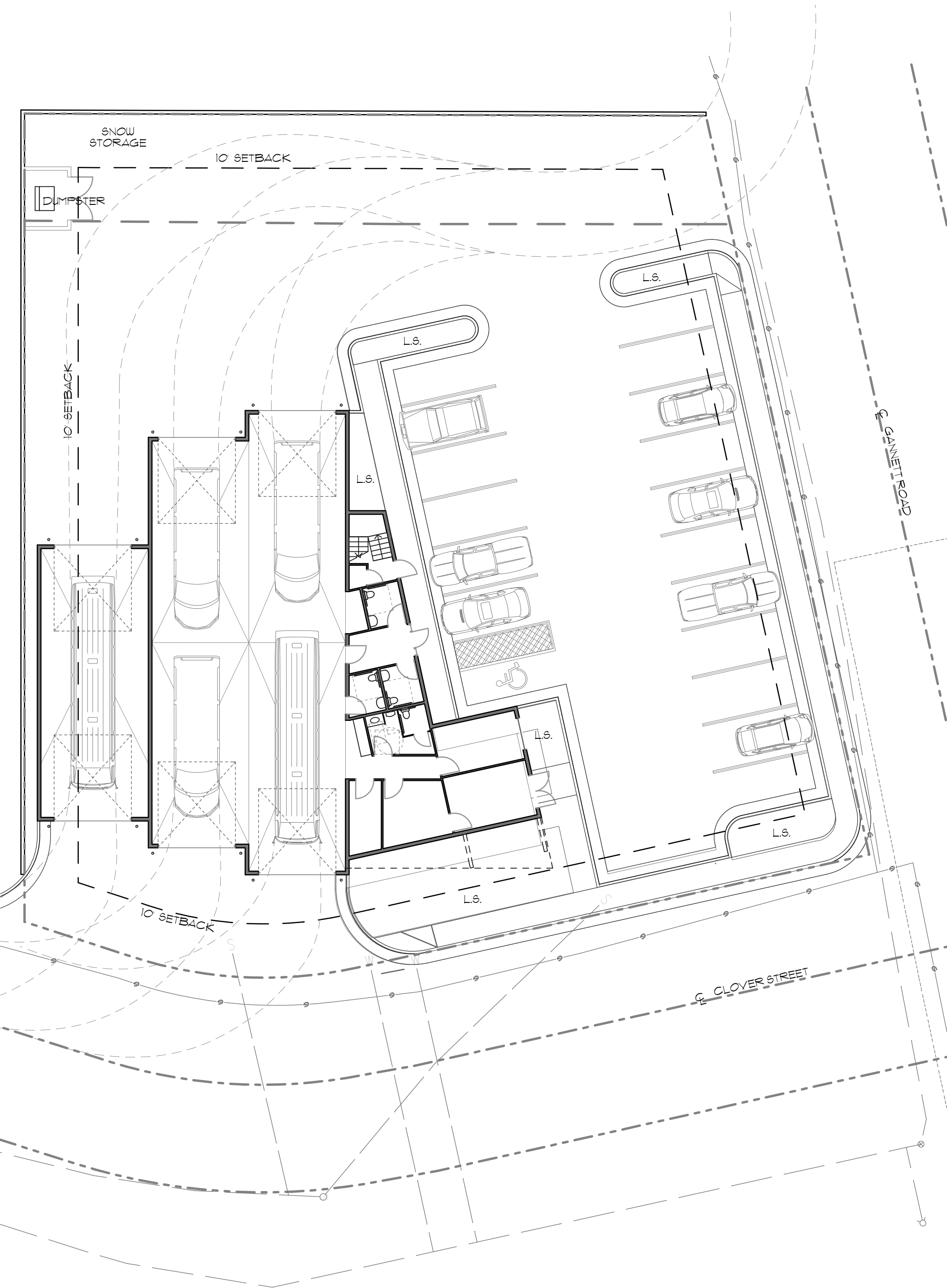












1 SITE LAYOUT STUDY 2
SD1

1/16" = 1'-0"





STUDY 1 - EAST ELEVATION

MOUNTAIN RIDES TRANSIT FACILITY
BELLEVUE, IDAHO

09.23.2014



STUDY 1 - NORTH ELEVATION

MOUNTAIN RIDES TRANSIT FACILITY
BELLEVUE, IDAHO

09.23.2014



STUDY 1 - PERSPECTIVE

MOUNTAIN RIDES TRANSIT FACILITY
BELLEVUE, IDAHO

09.23.2014



STUDY 2 - EAST ELEVATION

MOUNTAIN RIDES TRANSIT FACILITY
BELLEVUE, IDAHO

09.23.2014



STUDY 2 - SOUTH ELEVATION

MOUNTAIN RIDES TRANSIT FACILITY
BELLEVUE, IDAHO

09.23.2014



STUDY 2 - PERSPECTIVE

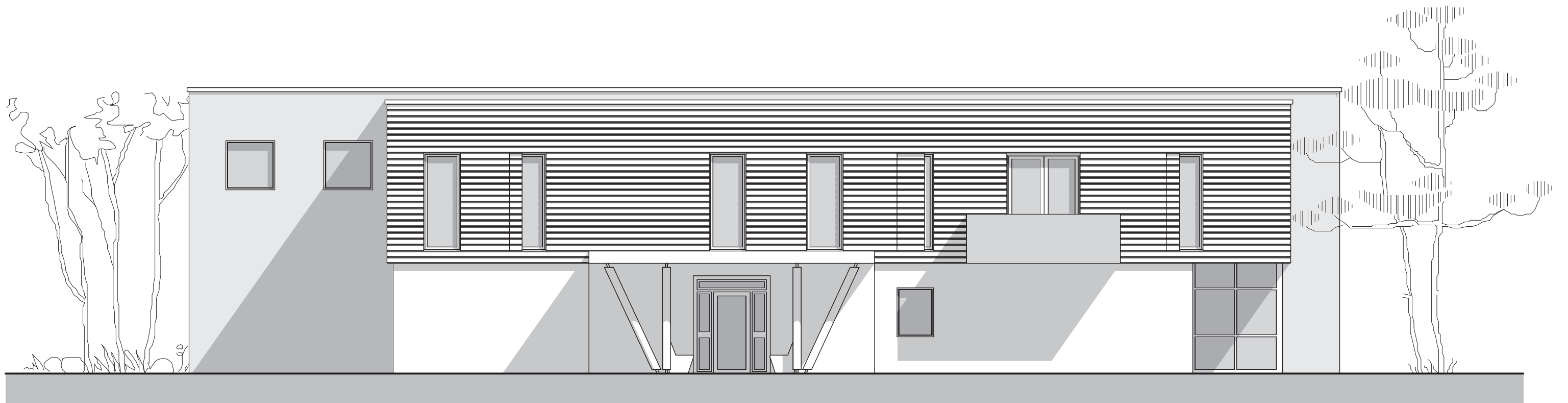
MOUNTAIN RIDES TRANSIT FACILITY
BELLEVUE, IDAHO

09.23.2014



STUDY 2 - PERSPECTIVE
MOUNTAIN RIDES TRANSIT FACILITY
BELLEVUE, IDAHO

09.23.2014



STUDY 3 - EAST ELEVATION

MOUNTAIN RIDES TRANSIT FACILITY
BELLEVUE, IDAHO

09.23.2014



STUDY 3 - NORTH ELEVATION

MOUNTAIN RIDES TRANSIT FACILITY
BELLEVUE, IDAHO

09.23.2014



STUDY 3 - PERSPECTIVE

MOUNTAIN RIDES TRANSIT FACILITY
BELLEVUE, IDAHO

09.23.2014

Re: LEEDs Option

Jason,

Before I leave for vacation, I want to give you an update. The issue is not entirely completed due to the need to talk with various consultants we are considering. Keeven is currently working with potential Mechanical & Electrical Engineers. One he is trying to reach is Paul Stoops (EE), a resident of the Sun Valley area.

First, I will tell you that we were and are very impressed with the experience and capabilities of Sharon. And we have assured her that she will be the person if we do the LEED steps. We have explained the process to our normal LEED Consultant. She understood and had nothing but compliments toward Sharon.

Both consultants must be using a similar LEED template because the fees for both individuals were within \$50.

The Architectural portions covers almost \$4000 in costs to register the project with LEED initially and again at the final certification step. The balance we have remaining in the architectural side is not something we can responsibly invade. Most of the potential savings will come from the engineering side - if there is savings to be had.

Sharon talked to an engineer in the valley who estimated \$1200 for the Commissioning step. Even if he were to settle at \$2000, it would represent a savings of \$2500 from our Boise person (largely due to travel).

We have talked to Brian Formusa, a local, to assist in Commissioning and/or possibly inspecting for a remote mechanical engineer.

When Keeven is able to talk with Paul Stoops, he (Keeven) will inquire about other local ME's. Keeven felt sure that he could have a final answer to you before your 17th meeting.

By copy of this memo to Sharon, we are asking her to discuss the LEED process with your board **if** you feel you have enough information to do so. I think it will be best if you coordinate with Sharon as the date approaches.

Thanks,
Paul

PS: I know the design is progressing. Keeven and Nelson are having fun!



LEED 2009 for New Construction and Major Renovation

Project Checklist

Mountain Rides Transit Center - Bellevue

29-Aug

14 10 2 Sustainable Sites Possible Points: 26

Y	N	?			
Y			Prereq 1	Construction Activity Pollution Prevention	
1			Credit 1	Site Selection	1
	5		Credit 2	Development Density and Community Connectivity	5
	1		Credit 3	Brownfield Redevelopment	1
6			Credit 4.1	Alternative Transportation—Public Transportation Access	6
1			Credit 4.2	Alternative Transportation—Bicycle Storage and Changing Rooms	1
3			Credit 4.3	Alternative Transportation—Low-Emitting and Fuel-Efficient Vehicles	3
	2		Credit 4.4	Alternative Transportation—Parking Capacity	2
	1		Credit 5.1	Site Development—Protect or Restore Habitat	1
	1		Credit 5.2	Site Development—Maximize Open Space	1
1			Credit 6.1	Stormwater Design—Quantity Control	1
	1		Credit 6.2	Stormwater Design—Quality Control	1
	1		Credit 7.1	Heat Island Effect—Non-roof	1
1			Credit 7.2	Heat Island Effect—Roof	1
1			Credit 8	Light Pollution Reduction	1

2 8 Water Efficiency Possible Points: 10

Y	N	?			
Y			Prereq 1	Water Use Reduction—20% Reduction	
2	2		Credit 1	Water Efficient Landscaping	2 to 4
	2		Credit 2	Innovative Wastewater Technologies	2
	4		Credit 3	Water Use Reduction	2 to 4

12 9 14 Energy and Atmosphere Possible Points: 35

Y	N	?			
Y			Prereq 1	Fundamental Commissioning of Building Energy Systems	
Y			Prereq 2	Minimum Energy Performance	
Y			Prereq 3	Fundamental Refrigerant Management	
10	9		Credit 1	Optimize Energy Performance	1 to 19
	6	1	Credit 2	On-Site Renewable Energy	1 to 7
	2		Credit 3	Enhanced Commissioning	2
2			Credit 4	Enhanced Refrigerant Management	2
	3		Credit 5	Measurement and Verification	3
	2		Credit 6	Green Power	2

2 6 6 Materials and Resources Possible Points: 14

Y	N	?			
Y			Prereq 1	Storage and Collection of Recyclables	
	3		Credit 1.1	Building Reuse—Maintain Existing Walls, Floors, and Roof	1 to 3
	1		Credit 1.2	Building Reuse—Maintain 50% of Interior Non-Structural Elements	1
1		1	Credit 2	Construction Waste Management	1 to 2
	2		Credit 3	Materials Reuse	1 to 2

Materials and Resources, Continued

Y	N	?			
		2	Credit 4	Recycled Content	1 to 2
1		1	Credit 5	Regional Materials	1 to 2
		1	Credit 6	Rapidly Renewable Materials	1
		1	Credit 7	Certified Wood	1

11 4 Indoor Environmental Quality Possible Points: 15

Y	N	?			
Y			Prereq 1	Minimum Indoor Air Quality Performance	
Y			Prereq 2	Environmental Tobacco Smoke (ETS) Control	
1			Credit 1	Outdoor Air Delivery Monitoring	1
		1	Credit 2	Increased Ventilation	1
1			Credit 3.1	Construction IAQ Management Plan—During Construction	1
		1	Credit 3.2	Construction IAQ Management Plan—Before Occupancy	1
			Credit 4.1	Low-Emitting Materials—Adhesives and Sealants	1
1			Credit 4.2	Low-Emitting Materials—Paints and Coatings	1
1			Credit 4.3	Low-Emitting Materials—Flooring Systems	1
1			Credit 4.4	Low-Emitting Materials—Composite Wood and Agrifiber Products	1
		1	Credit 5	Indoor Chemical and Pollutant Source Control	1
1			Credit 6.1	Controllability of Systems—Lighting	1
		1	Credit 6.2	Controllability of Systems—Thermal Comfort	1
1			Credit 7.1	Thermal Comfort—Design	1
1			Credit 7.2	Thermal Comfort—Verification	1
1			Credit 8.1	Daylight and Views—Daylight	1
1			Credit 8.2	Daylight and Views—Views	1

4 2 Innovation and Design Process Possible Points: 6

Y	N	?			
1			Credit 1.1	Innovation in Design: EP for SS 4.1 Comp Transportation Mgt Plan	1
1			Credit 1.2	Innovation in Design: ID education program with signs in buses	1
1			Credit 1.3	Innovation in Design: ID highly efficient engine block heaters	1
		1	Credit 1.4	Innovation in Design: ID attend INL driving program	1
		1	Credit 1.5	Innovation in Design: Specific Title	1
1			Credit 2	LEED Accredited Professional	1

1 1 2 Regional Priority Credits Possible Points: 4

Y	N	?			
		1	Credit 1.1	Regional Priority: EA 1	1
1			Credit 1.2	Regional Priority: MR 2	1
		1	Credit 1.3	Regional Priority: Possibly WE 2 or EA 3	1
	1		Credit 1.4	Regional Priority: Specific Credit	1

46 26 38 Total Possible Points: 110

Certified 40 to 49 points Silver 50 to 59 points Gold 60 to 79 points Platinum 80 to 110